

# Camp Solelim PACKING LIST

## CLOTHING



- 15 t-shirts/tanks
- 8 shorts
- 7 sweatshirts/hoodies
- 4 long sleeve shirts
- 7 sweatpants/leggings
- 2 pairs jeans/pants
- 3 pairs of pajamas
- 4 bathing suits
- 12 pairs of underwear
- 12 pairs of socks
- 2 pairs of running shoes
- 2 pairs of flip flops or slides
- 3 sun hats
- 2-3 Shabbat outfits\*
- 1 kippah for Shabbat (optional)
- 1 bathrobe
- 1 raincoat/kway
- 1 pair of rain boots
- 1 toque
- 1 fall jacket
- White item(s) for tie-dying (optional)
- Costumes for special programs (optional)

\*Shabbat at camp is casual. Shorts, jeans, khakis, t-shirts, polos or sundresses are all welcome!

## TOILETRIES



- 1 shower caddy
- 2 toothbrushes w/cases
- toothpaste
- comb/hairbrush
- face/body wash or soap
- shampoo/conditioner
- deoderant
- sunscreen (SPF 30 or higher)
- Insect repellant
- hand/body moisturizer
- razors/shaving cream
- feminine products
- Extra pair of glasses and/or contact lenses/cases/solution

## LINENS



- 1 twin comforter
- 2 fitted twin sheets
- 1 pillow
- 2 pillow cases
- 2 hand towels
- 4 bath towels
- 4 beach towels
- 1 sleeping bag

## SUNDRY

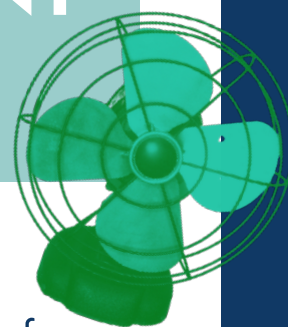


- 3 reusable water bottles
- Disposable face masks (more information will be provided)
- Sunglasses
- 1 backpack
- 1 laundry bag
- Hand sanitizer
- Stationary, pens, stamps, envelopes, address book
- flashlight and batteries
- nail clippers or file
- tissues/wet wipes
- Sharpie marker
- Inexpensive camera (optional)

## DO NOT SEND TO CAMP

- Over-the-counter meds
- Candles, lighters, matches, fire crackers
- Glass containers
- Electronic or gas appliances (hotplates, kettles, electric blankets, heaters, fly swatters, mini fridge, etc.)
- Devices that violate our screen free policy
- Expensive jewelry, clothing, cameras, etc.
- Clothing that cannot be laundered in commercial laundry machines/dryers
- Knives
- Heels/platform shoes
- Food, snacks/candy, bottled water, gum

## FOR THE TENT (OPTIONAL)



- Duct tape
- Small standing or clip fan
- Power bar/ extension chord
- Foam puzzle pieces
- Egg crate mattress
- Twinkle lights
- Head lamp/reading light

## SPECIAL ITEMS (OPTIONAL)



- Musical instrument
- Baseball glove
- Hockey stick
- Dry bag (min. 30L)

We have these things at camp, but some like to bring their own!

